

DA DUAL LINE MANUALLY OPERATED PUMP

OPERATOR MANUAL



NANJING BIJUR MACHINERY PRODUCTS LTD.

INDEX

<u>1,General</u> -----	3
<u>2,Specifications & Overall Dimensions</u> -----	5
<u>3,Operation & Maintenance</u> -----	6
<u>4,Troubleshooting</u> -----	7

1.General

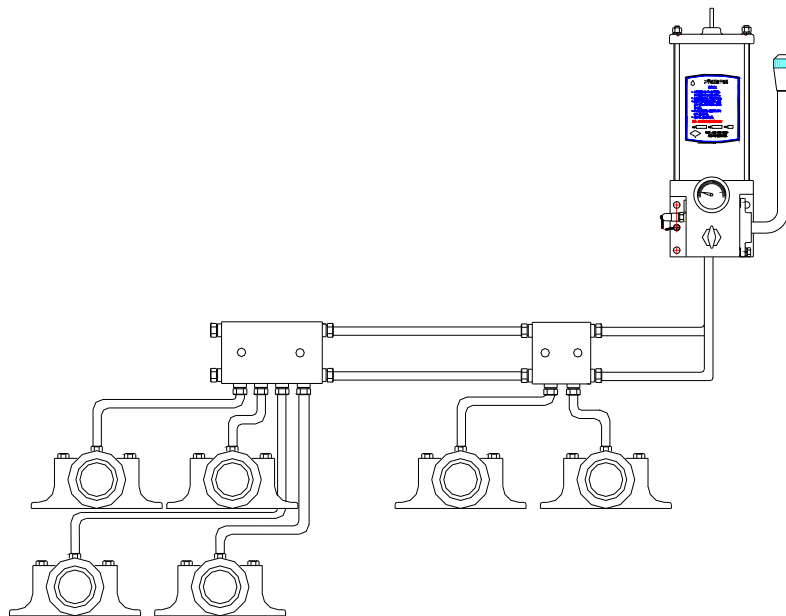
DA manual grease pump is a kind of double-action piston high pressure pump, suited for Single Line or Dual line system. Equal strength is applied in design and it is easy and fast to filling reservoir. Suction filter screen is located at inlet and a grease level indicator assembled on the top cover. DA pump is widely used in steel plant, mine plant, heavy-duty machinery, port machinery .

Operation principle of DA pump:

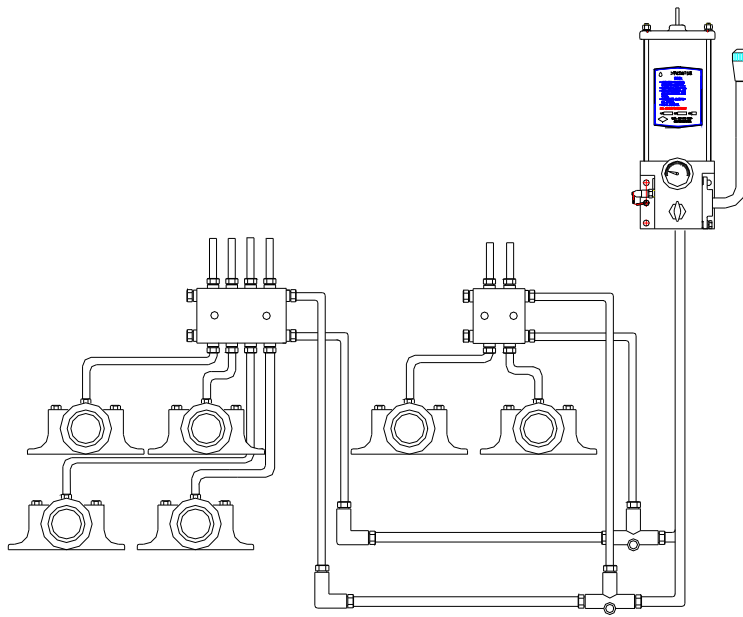
Wagging the operating lever and the rack drives piston moving to and fro, oil is pressed through check valve and to the outlet. DA manual pump is always work with Dual Line distributor. Oil from pump drives the distributor piston to one side on distributor, pressure increases and retain for a certain time, unless operating direction conversion knob to change direction, in this way, distributor will discharge again. At this time, one line relieves pressure and the other delivers oil.

Typical Lubrication System Layout of DA Pump Using in Dual-line System

Working with DM Dual Line Distributor:

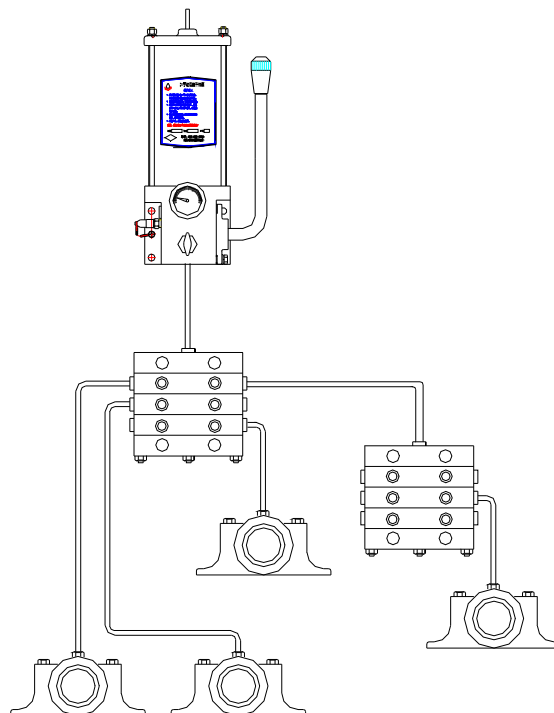


Working with DD Dual Line Distributor:



Typical Lubrication System Layout of DA Pump Using in SINGLE LINE System

Working with PROGRESSIVE Distributor:

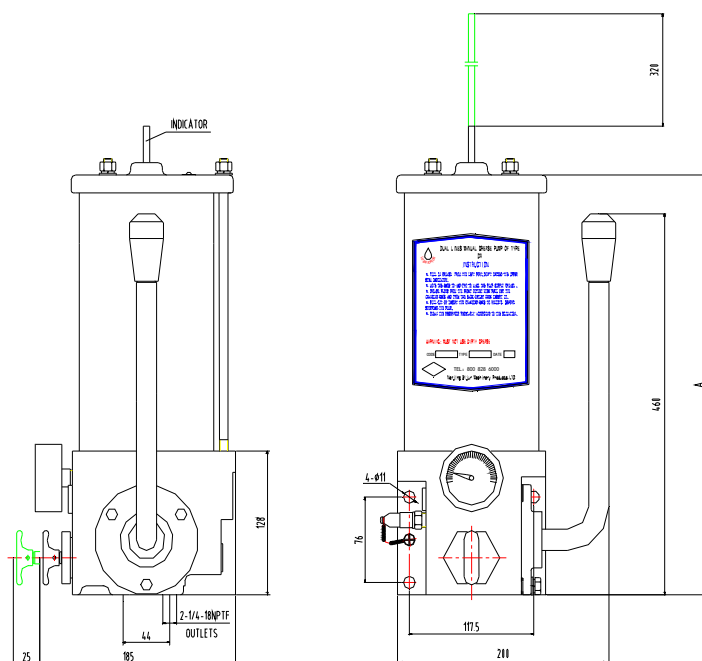


2.Specification & Overall dimensions

Specifications chart

Type	Lubricant	Reservoir	Discharge (mm/stroke)	A (mm)	Grease viscosity range	Working pressure Max (MPa)
DA4-101A	Grease	2Kg	7.4	610	Grease: NLGI000~NLGI 2 Oil: N68 and upwards	20
DA4-101B	Oil	2.4L		559		
DA5-101A	Grease	4Kg		940		
DA5-101B	Oil	4.3L		892		
DA6-101A	Grease	6Kg		1293		
DA6-101B	Oil	6.1L		1242		

Overall dimensions



3.Operation & Maintenance

Operation instruction

1. Filling clean grease into reservoir through inlet on left side of the pump until grease level indicator on the reservoir cover stops.
2. Move the operating lever back and forth then pump presses grease to outlet.
3. Pull out direction conversion knob at the front of pump and can see oil at the front outlet; oppositely, inserting will result in discharging at back outlet.
4. Before the pump stops, remember to pull out or insert the direction conversion knob to relieve system pressure.
5. Cleaning reservoir termly according to ambient situation.

Trouble-Free Operation

1. Use clean grease
2. Be sure there is grease in reservoir when using.
3. Inspect pump termly to be sure no pipes broken, replace if necessary.
4. Be sure all components are well connected.

4.Troubleshooting

SYMPTOM	POSSIBLE CAUSE	REMEDY
Pump does no build pressure	1 , Plug or adaptor is not tight enough	Tighten plugs and adaptors
	2 , There is air in system	Filling oil to remove air in system
No oil at outlet	1 , Pipe clogged	Use clean oil
	2 , Leakage in system	Tighten plugs and adaptors